

Trial Examination 2023

VCE Mathematical Methods Units 3&4

Written Examination 1

Question and Answer Booklet

Reading time: 15 minutes

Writing time: 1 hour

Student's Name: _____

Teacher's Name: _____

Structure of booklet

<i>Number of questions</i>	<i>Number of questions to be answered</i>	<i>Number of marks</i>
9	9	40

Students are permitted to bring into the examination room: pens, pencils, highlighters, erasers, sharpeners and rulers.

Students are NOT permitted to bring into the examination room: any technology (calculators or software), notes of any kind, blank sheets of paper and/or correction fluid/tape.

Materials supplied

Question and answer booklet of 12 pages

Formula sheet

Working space is provided throughout the booklet.

Instructions

Write your **name** and your **teacher's name** in the space provided above on this page.

Unless otherwise indicated, the diagrams in this booklet are **not** drawn to scale.

All written responses must be in English.

At the end of the examination

You may keep the formula sheet.

Students are NOT permitted to bring mobile phones and/or any other unauthorised electronic devices into the examination room.

Students are advised that this is a trial examination only and cannot in any way guarantee the content or the format of the 2023 VCE Mathematical Methods Units 3&4 Written Examination 1.

Neap[®] Education (Neap) Trial Exams are licensed to be photocopied or placed on the school intranet and used only within the confines of the school purchasing them, for the purpose of examining that school's students only for a period of 12 months from the date of receiving them. They may not be otherwise reproduced or distributed. The copyright of Neap Trial Exams remains with Neap. No Neap Trial Exam or any part thereof is to be issued or passed on by any person to any party inclusive of other schools, non-practising teachers, coaching colleges, tutors, parents, students, publishing agencies or websites without the express written consent of Neap.

Instructions

Answer **all** questions in the spaces provided.

In all questions where a numerical answer is required, an exact value must be given, unless otherwise specified.

In questions where more than one mark is available, appropriate working **must** be shown.

Unless otherwise indicated, the diagrams in this booklet are **not** drawn to scale.

Question 1 (4 marks)

Let $f: \left(\frac{1}{2}, \infty\right) \rightarrow \mathbb{R}, f(x) = \frac{1}{4x-2}$.

- a. Find $f'(x)$. 1 mark

- b. i. Find an antiderivative of $f(x)$. 1 mark

- ii. Express $\int_1^5 f(x)dx$ in the form $\log_e(\sqrt{a})$, where a is an integer. 2 marks

Question 2 (2 marks)

The derivative of the function $f(x)$ has the rule $f'(x) = 3\sin(2x)$.

Given that $f\left(\frac{\pi}{3}\right) = 1$, find $f(x)$.

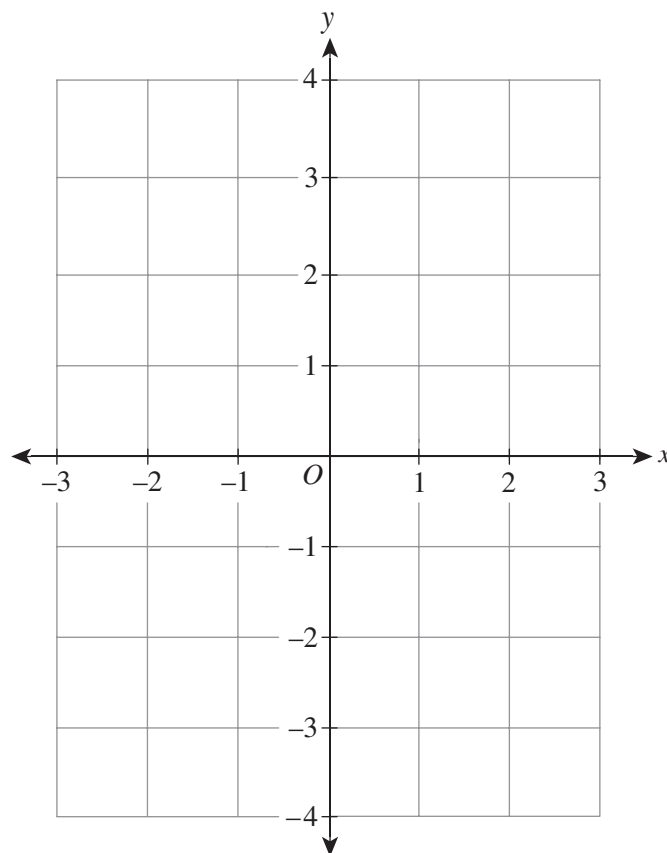
Question 3 (4 marks)Let $f: (-2, 1] \rightarrow \mathbb{R}, f(x) = x^3 + 3x^2$.

- a. Find the coordinates of the stationary point.

2 marks

- b. On the axes below, sketch the graph of $y = f(x)$. Label the endpoints and stationary point with their coordinates.

2 marks



Question 4 (3 marks)

For events A and B , $\Pr(A \cap B') = 0.2$ and $\Pr(A' \cap B) = 0.1$.

Let $\Pr(A \cap B) = k^2$ and $\Pr(A') = 1.6k$.

- a.** Find an expression for $\Pr(A' \cap B')$ in terms of k . 1 mark

- b.** Find the value of k . 2 marks

Question 7 (4 marks)

The possible outcomes when a die is rolled are 1, 2, 3, 4, 5 or 6. Each outcome is equally likely.

A die is rolled three times, and the resulting number is recorded each time.

- a.** Find the probability that the resulting number is the same each time. 1 mark

- b.** Find the probability that the resulting number is the same exactly two times. 1 mark

- c.** What is the probability that the resulting number is greater than 3 each time, given that it is the same exactly two times? 2 marks

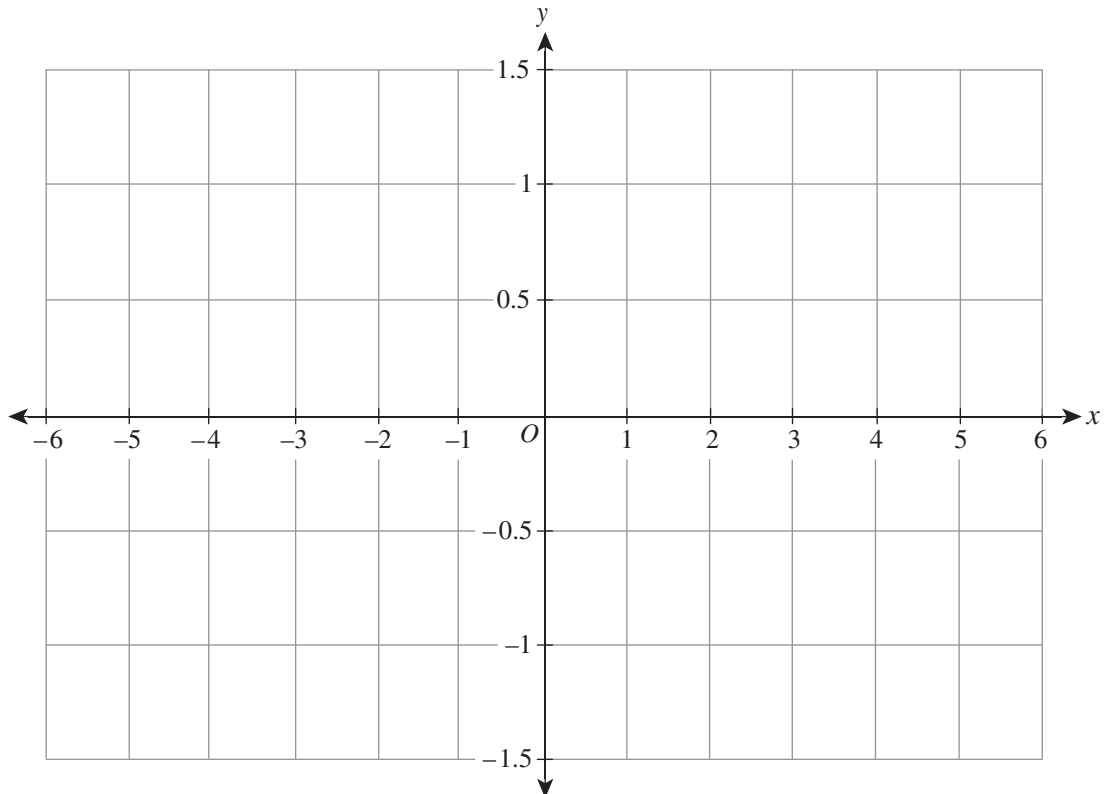
Question 8 (12 marks)Let $f(x) = \log_e(x - 2)$.

- a. State the domain of f .

1 mark

- b. On the axes below, sketch the graph of $y = f(x)$. Label the axial intercept with its coordinates and the asymptote with its equation.

2 marks

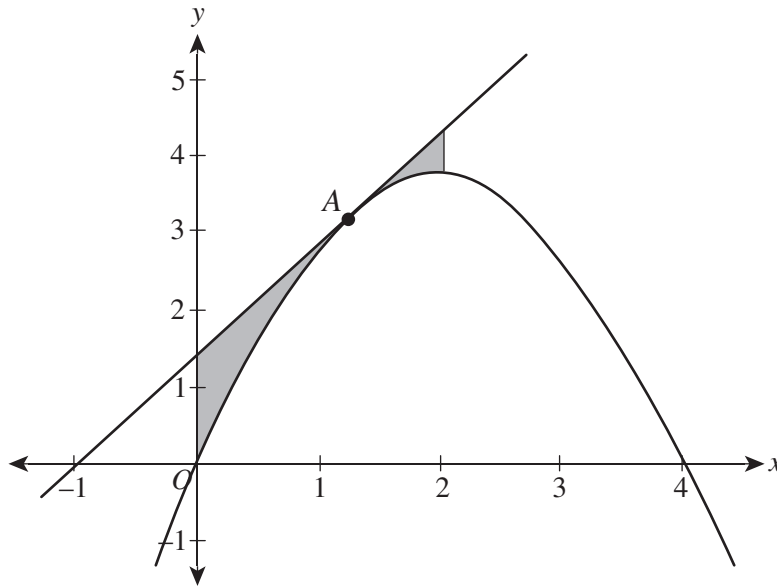


f. State the domain and range of $h(x)$.

2 marks

Question 9 (6 marks)

The tangent to the graph of $f(x) = 4x - x^2$ at the point $A(a, f(a))$ is shown below.



- a. Show that the equation of the tangent is $y = (4 - 2a)x + a^2$. 2 marks



Trial Examination 2023

VCE Mathematical Methods Units 3&4

Written Examinations 1 and 2

Formula Sheet

Instructions

This formula sheet is provided for your reference.
A question and answer booklet is provided with this formula sheet.

Students are NOT permitted to bring mobile phones and/or any other unauthorised electronic devices into the examination room.

MATHEMATICAL METHODS FORMULAS

Mensuration

area of a trapezium	$\frac{1}{2}(a+b)h$	volume of a pyramid	$\frac{1}{3}Ah$
curved surface area of a cylinder	$2\pi rh$	volume of a sphere	$\frac{4}{3}\pi r^3$
volume of a cylinder	$\pi r^2 h$	area of a triangle	$\frac{1}{2}bc \sin(A)$
volume of a cone	$\frac{1}{3}\pi r^2 h$		

Calculus

$\frac{d}{dx}(x^n) = nx^{n-1}$	$\int x^n dx = \frac{1}{n+1}x^{n+1} + c, n \neq -1$		
$\frac{d}{dx}((ax+b)^n) = an(ax+b)^{n-1}$	$\int (ax+b)^n dx = \frac{1}{a(n+1)}(ax+b)^{n+1} + c, n \neq -1$		
$\frac{d}{dx}(e^{ax}) = ae^{ax}$	$\int e^{ax} dx = \frac{1}{a}e^{ax} + c$		
$\frac{d}{dx}(\log_e(x)) = \frac{1}{x}$	$\int \frac{1}{x} dx = \log_e(x) + c, x > 0$		
$\frac{d}{dx}(\sin(ax)) = a \cos(ax)$	$\int \sin(ax) dx = -\frac{1}{a} \cos(ax) + c$		
$\frac{d}{dx}(\cos(ax)) = -a \sin(ax)$	$\int \cos(ax) dx = \frac{1}{a} \sin(ax) + c$		
$\frac{d}{dx}(\tan(ax)) = \frac{a}{\cos^2(ax)} = a \sec^2(ax)$			
product rule	$\frac{d}{dx}(uv) = u \frac{dv}{dx} + v \frac{du}{dx}$	quotient rule	$\frac{d}{dx}\left(\frac{u}{v}\right) = \frac{v \frac{du}{dx} - u \frac{dv}{dx}}{v^2}$
chain rule	$\frac{dy}{dx} = \frac{dy}{du} \frac{du}{dx}$	Newton's method	$x_{n+1} = x_n - \frac{f(x_n)}{f'(x_n)}$
trapezium rule approximation	$\text{Area} \approx \frac{x_n - x_0}{2n} \left[f(x_0) + 2f(x_1) + 2f(x_2) + \dots + 2f(x_{n-2}) + 2f(x_{n-1}) + f(x_n) \right]$		

Probability

$\Pr(A) = 1 - \Pr(A')$		$\Pr(A \cup B) = \Pr(A) + \Pr(B) - \Pr(A \cap B)$	
$\Pr(A B) = \frac{\Pr(A \cap B)}{\Pr(B)}$			
mean	$\mu = E(X)$	variance	$\text{var}(X) = \sigma^2 = E((X - \mu)^2) = E(X^2) - \mu^2$
binomial coefficient	$\binom{n}{x} = \frac{n!}{x!(n-x)!}$		

Probability distribution		Mean	Variance
discrete	$\Pr(X = x) = p(x)$	$\mu = \sum x p(x)$	$\sigma^2 = \sum (x - \mu)^2 p(x)$
binomial	$\Pr(X = x) = \binom{n}{x} p^x (1-p)^{n-x}$	$\mu = np$	$\sigma^2 = np(1-p)$
continuous	$\Pr(a < X < b) = \int_a^b f(x) dx$	$\mu = \int_{-\infty}^{\infty} x f(x) dx$	$\sigma^2 = \int_{-\infty}^{\infty} (x - \mu)^2 f(x) dx$

Sample proportions

$\hat{p} = \frac{X}{n}$		mean	$E(\hat{p}) = p$
standard deviation	$\text{sd}(\hat{p}) = \sqrt{\frac{p(1-p)}{n}}$	approximate confidence interval	$\left(\hat{p} - z \sqrt{\frac{\hat{p}(1-\hat{p})}{n}}, \hat{p} + z \sqrt{\frac{\hat{p}(1-\hat{p})}{n}} \right)$

END OF FORMULA SHEET